



IL “Road to Renewal”

...a unique opportunity to invest in a better
future (ISBE)

Committee of the Whole Presentation
September 14, 2021

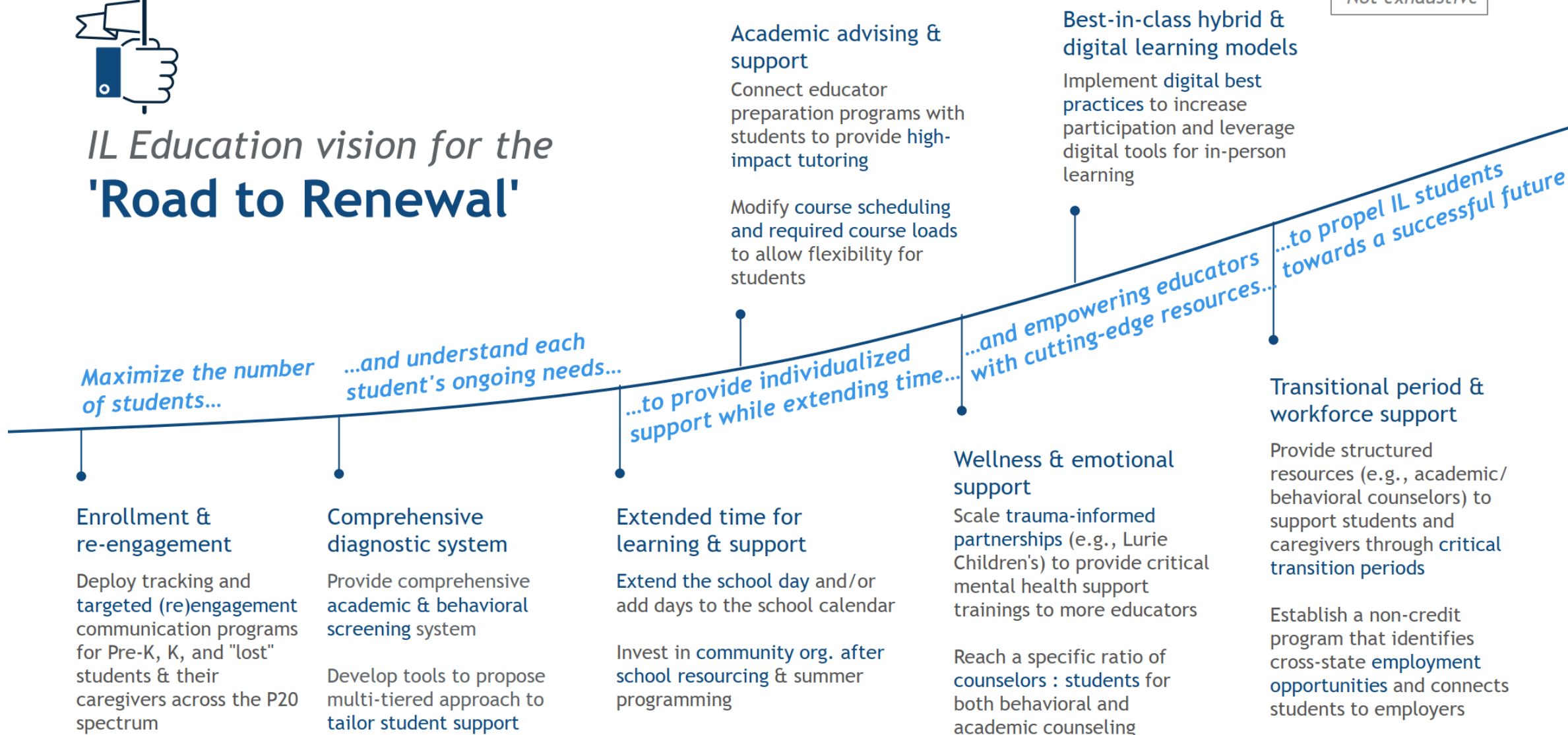
ESSER Funding

ESSER I	ESSER II	ESSER III
CARES Act (Coronavirus Aid, Relief, & Economic Security)	CRRSA Act (Coronavirus Response & Relief Supplemental Appropriations)	ARP Act (American Rescue Plan)
Mar 13, 2020 – Sept 30, 2022	Mar 13, 2020 – Sept 30, 2023	Mar 13, 2020 – Sept 30, 2024
\$1,254,647	\$4,247,390	\$10,536,546
To prevent, prepare and respond to COVID-19	Same conditions as ESSER I; also address learning loss, prepare for re-opening of schools and improve air quality	Address learning loss through evidenced-based interventions; address the impact of COVID-19 on underrepresented student subgroups; 20% of allocation towards SEL and mental health
		Plan must seek public comment and be posted on district website
Grant fully expended in FY22	Grant fully allocated for FY22	<i>Tentative grant ready for review</i>



IL Education vision for the 'Road to Renewal'

**Not exhaustive*



Resource Guide Chapters

12 priority topic areas to inform spending decisions along the 'Road to Renewal' vision

- 1 Support **enrollment, retention, and re-engagement** initiatives to ensure academic progression across P-20 spectrum
- 2 Build **individualized student fact base** with academic and behavioral diagnostics and progress monitoring
- 3 **Reimagine school calendar** and expand school day / year
- 4 Provide **out-of-classroom learning experiences** through tutoring, after school, summer camps, etc.
- 5 **Connect** districts/institutions with **community organizations** that connect students to comprehensive support
- 6 Enhance accessibility of **academic & behavioral counseling resources**, especially for at-risk students (including year-round support)
- 7 Invest in infrastructure for **mental wellness** and trauma-informed, culturally responsive schools, including educator P.D. and support
- 8 Evaluate and improve hybrid/remote learning models to develop long-term **digital strategic priorities**
- 9 Improve **quality of learning** through altered classroom structures, educator professional development, and digital tools
- 10 Increase **flexibility** of secondary, post-secondary environment **to accommodate for other responsibilities**
- 11 Support students with structured engagement and enhanced communications in **transition periods**
- 12 Design an integrated **education/workforce strategy** and playbook and offer work-driven credit opportunities

USDE: COVID-19 Handbook



- Three priority areas:
 - 1) Creating Safe and Healthy Learning Environments
 - 2) Addressing Lost Instructional Time
 - 3) Supporting Educator and Staff Stability and Well-Being

Grant Set-Asides

- 20% must address learning loss = \$2,107,309
- Summer enrichment = \$143,160, minimum
- After school programming = \$143,160, minimum

ESSER III

Major areas of focus

Feedback from parents, students, teachers and administration considered in the development of this grant.

Note: The items you will see in each area are suggestions and still require ISBE approval.



Resource Guide Chapters

12 priority topic areas to inform spending decisions along the 'Road to Renewal' vision

1 Support **enrollment, retention, and re-engagement** initiatives to ensure academic progression across P-20 spectrum

2 Build **individualized student fact base** with academic and behavioral diagnostics and progress monitoring

3 **Reimagine school calendar** and expand school day / year

4 Provide **out-of-classroom learning experiences** through tutoring, after school, summer camps, etc.

5 **Connect** districts/institutions with **community organizations** that connect students to comprehensive support

6 Enhance accessibility of **academic & behavioral counseling resources**, especially for at-risk students (including year-round support)

7 Invest in infrastructure for **mental wellness** and trauma-informed, culturally responsive schools, including educator P.D. and support

8 Evaluate and improve hybrid/remote learning models to develop long-term **digital strategic priorities**

9 Improve **quality of learning** through altered classroom structures, educator professional development, and digital tools

10 Increase **flexibility** of secondary, post-secondary environment to **accommodate for other responsibilities**

11 Support students with structured engagement and enhanced communications in **transition periods**

12 Design an integrated **education/workforce strategy** and playbook and offer work-driven credit opportunities

USDE: COVID-19 Handbook



- Three priority areas:
 - 1) Creating Safe and Healthy Learning Environments
 - 2) Addressing Lost Instructional Time
 - 3) Supporting Educator and Staff Stability and Well-Being

Individualized Student Fact Base

- Sylvan Advanced Reading Program = \$28,500
- SMARTS curriculum = \$11,980
 - Researched-based executive functioning curriculum

- Total for this area of focus: \$40,480

Out-of-Class Learning

- Summer School = \$539,448
 - Staff, transportation, daily lunch
 - Concept Recovery = \$59,973
 - Staff
 - Summer Enrichment = \$313,696
 - Staff, transportation, student supplies
 - After school programming = \$143,367
 - Saturday school, after school study centers, private music lessons (music & choir)
 - Additional out of class learning:
 - Tutoring Services = \$500,000
 - Music lessons for band/choir students = \$157,500
 - Related services for IEP students = \$41,038
 - Instruction and case management minutes
 - SAT prep = \$18,400
- Total for this area of focus: \$1,773,422

Academic & Behavioral Resources

- Math & Reading Interventionist = \$643,987
 - Additional Support Staff = \$533,415
 - 2 nurses (additional nurses will be provided through Aya agency)
 - 2 social workers
 - 2 psychologists
 - Related Services for IEP Students = \$8,878
- Total for this area of focus: \$1,186,280

Mental Wellness

- Student decompression space = \$3000
- Staff collaboration space = \$20,000
- Yoga/meditation services for staff = \$8,600
- School-wide reading program related to SEL = \$10,000
- SEL curriculum for students = \$9,200
- Crisis intervention and de-escalation training for staff = \$3,000

- Total for this area of focus: \$53,800

Develop Long-Term Digital Priorities

- Apple pencils for students = \$129,700
- Keyboards for iPads = \$48,000
- Classroom iPad charging docks = \$17,500
- Large format projectors and screens for gyms and library = \$124,000

• Total for this area of focus = \$319,200

Improving the Quality of Learning

- Apple Coaching for Teachers = \$91,050
- Stipends for Teacher Completion of PD = \$175,000
 - Google Level 1 & 2, Trauma-Informed, Paper.Co
- Classroom/IMC flexible seating for students = \$260,000
- Professional development on student engagement = \$10,000

- Total for this area of focus = \$590,508

Transition Periods

- Extended learning for special education students = \$520,000
- Classroom fee for transition program at SSC = \$52,500

- Total for this area of focus: \$572,500

Workforce Strategy

- Stipend for Community Partners = \$5,000
- Software for STEM Lab = \$10,000
- Transportation for CDE experiences = \$6,000
- Dual Credit Development = \$6,619
- Welding program renovations = \$100,000
- STEM Lab Installations = \$48,000

- Total for this area of focus: \$219,619

Safe and Healthy Learning Environments

- Bremen hot water pipe replacement = \$400,000
 - Bremen air conditioning replacement = \$50,000
 - Tinley Park pool surge tank repair = \$33,605
 - Oak Forest IMC roof repair = \$250,000
 - Nurse contract service = \$788,480
 - Clean and repair musical instruments = \$15,000
 - Purchase cafeteria tables to improve social distancing = \$300,000
 - Outdoor tables for class use and/or student lunches = \$16,000
 - Conversion of drinking fountains to filling stations = \$22,200
 - Security system to connect all doors = \$120,000
 - iPad screen protectors = \$25,000
 - Sanitizing products and PPE for buildings = \$3,724,513
- Total for the area of focus: \$5,801,118

Summary

State Set-Asides:

- Learning Loss = \$2,420,908
- Summer Enrichment = \$284,815
- After School Programming = \$151,867
- Safety & Sanitation
 - Bucket for holding remaining funds

Final comments/ideas, please complete
Google Form – [ESSER III Feedback](#)

